



# SAAD GROUP.

## PRINT COLLECTION -2023

Prepared

By

Nice Denim Design Studio

(Non Denim Department)

# Style No-01

Say Hello To A New Movement Of Freedom

The New Horizons' Denim That Allows The Wearer Unparalleled Freedom Of Movement. Taking Inspiration From This Notion, We Named The New Line Horizons' And Developed A Campaign That Showcases The Freedom Of Movement Allowed By The Virtues Inherent In The Product.



| Serial No.   | STPL-D.N-2483/07 |
|--------------|------------------|
| Construction | 30x30/96x60      |
| Weave        | 2/1 S Twill      |
| Composition  | 100% Viscose     |
| Finish       | Soft finish      |
| Color        | AOP              |
| Width        | 57"-58"          |
| GSM          | 136 (± 5%)       |
| Reference    | 123/21           |

| Serial No.   | STPL-W.O-1631 |
|--------------|---------------|
| Construction | 30x30/76x64   |
| Weave        | 1/1 Plain     |
| Composition  | 100% Viscose  |
| Finish       | Soft finish   |
| Color        | AOP           |
| Width        | 59"           |
| GSM          | 124 (± 5%)    |
| Reference    | 123/21        |

# Style No-02

Say Hello To A New Movement Of Freedom

The New Horizons' Denim That Allows The Wearer Unparalleled Freedom Of Movement. Taking Inspiration From This Notion, We Named The New Line Horizons' And Developed A Campaign That Showcases The Freedom Of Movement Allowed By The Virtues Inherent In The Product.



| Serial No.   | STPL-D.N-2479/08 |
|--------------|------------------|
| Construction | 30x30/96x60      |
| Weave        | 2/1 S Twill      |
| Composition  | 100% Viscose     |
| Finish       | Soft finish      |
| Color        | AOP              |
| Width        | 57"-58"          |
| GSM          | 136 (± 5%)       |
| Reference    | 126/21           |



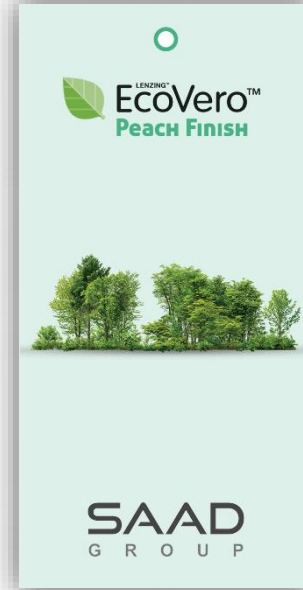
| Serial No.   | STPL-D.N-2482/07 |
|--------------|------------------|
| Construction | 30x30/96x60      |
| Weave        | 2/1 S Twill      |
| Composition  | 100% Viscose     |
| Finish       | Soft finish      |
| Color        | AOP              |
| Width        | 57"              |
| GSM          | 134 (± 5%)       |
| Reference    | 165/21           |



# Style No-03

Say Hello To A New Movement Of Freedom

The New Horizons' Denim That Allows The Wearer Unparalleled Freedom Of Movement. Taking Inspiration From This Notion, We Named The New Line Horizons' And Developed A Campaign That Showcases The Freedom Of Movement Allowed By The Virtues Inherent In The Product.



| Serial No.   | STPL-NF-01159 |
|--------------|---------------|
| Construction | 20x20/96x56   |
| Weave        | 2/2 Twill     |
| Composition  | 100% Viscose  |
| Finish       | Soft finish   |
| Color        | AOP           |
| Width        | 57"           |
| GSM          | 195 (± 5%)    |
| Reference    | STPL          |



| Serial No.   | STPL-D.N-1702/02 |
|--------------|------------------|
| Construction | 40x40/103x60     |
| Weave        | 2/1 S Twill      |
| Composition  | 100% Viscose     |
| Finish       | Soft finish      |
| Color        | AOP              |
| Width        | 56"-57"          |
| GSM          | 140 (± 5%)       |
| Reference    | 144/21           |

# Style No-04

Say Hello To A New Movement Of Freedom

The New Horizons' Denim That Allows The Wearer Unparalleled Freedom Of Movement. Taking Inspiration From This Notion, We Named The New Line Horizons' And Developed A Campaign That Showcases The Freedom Of Movement Allowed By The Virtues Inherent In The Product.



| Serial No.   | STPL-D.N-2596/07 |
|--------------|------------------|
| Construction | 30x30/96x60      |
| Weave        | 2/1 S Twill      |
| Composition  | 100% Viscose     |
| Finish       | Soft finish      |
| Color        | AOP              |
| Width        | 57"-58"          |
| GSM          | 1364(± 5%)       |
| Reference    | 162/21           |



| Serial No.   | STPL-D.N-823 |
|--------------|--------------|
| Construction | 40x30/125x68 |
| Weave        | 2/1 S Twill  |
| Composition  | 100% Viscose |
| Finish       | Soft finish  |
| Color        | AOP          |
| Width        | 59"-60"      |
| GSM          | 140(± 5%)    |
| Reference    | 147/21       |



# Style No-05

Say Hello To A New Movement Of Freedom

The New Horizons' Denim That Allows The Wearer Unparalleled Freedom Of Movement. Taking Inspiration From This Notion, We Named The New Line Horizons' And Developed A Campaign That Showcases The Freedom Of Movement Allowed By The Virtues Inherent In The Product.



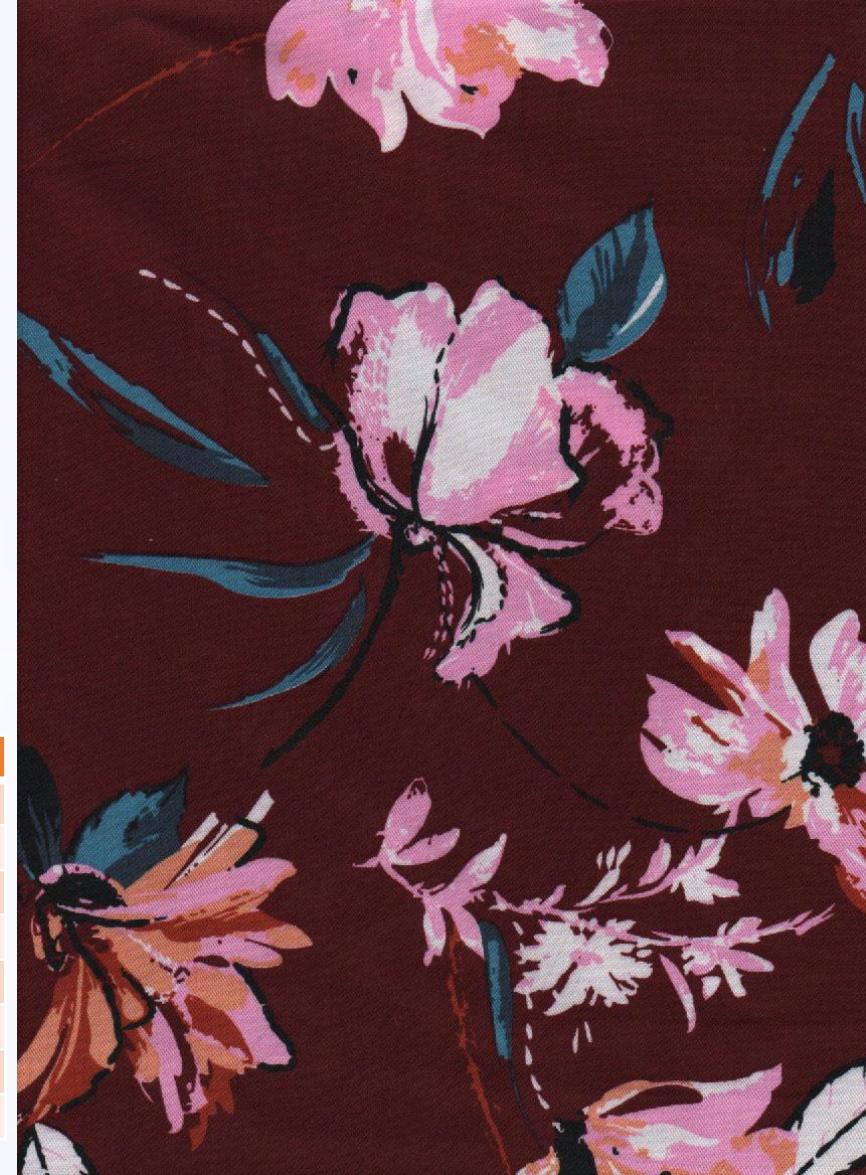
| Serial No.   | STPL-D.N-2475/04 |
|--------------|------------------|
| Construction | 30x30/96x60      |
| Weave        | 2/1 S Twill      |
| Composition  | 100% Viscose     |
| Finish       | Soft finish      |
| Color        | AOP              |
| Width        | 57"-58"          |
| GSM          | 136 (± 5%)       |
| Reference    | 119/21           |

| Serial No.   | STPL-D.N-2475/04 |
|--------------|------------------|
| Construction | 30x30/96x60      |
| Weave        | 2/1 S Twill      |
| Composition  | 100% Viscose     |
| Finish       | Soft finish      |
| Color        | AOP              |
| Width        | 57"-58"          |
| GSM          | 136 (± 5%)       |
| Reference    | 119/21           |

# Style No-06

Say Hello To A New Movement Of Freedom

The New Horizons' Denim That Allows The Wearer Unparalleled Freedom Of Movement. Taking Inspiration From This Notion, We Named The New Line Horizons' And Developed A Campaign That Showcases The Freedom Of Movement Allowed By The Virtues Inherent In The Product.



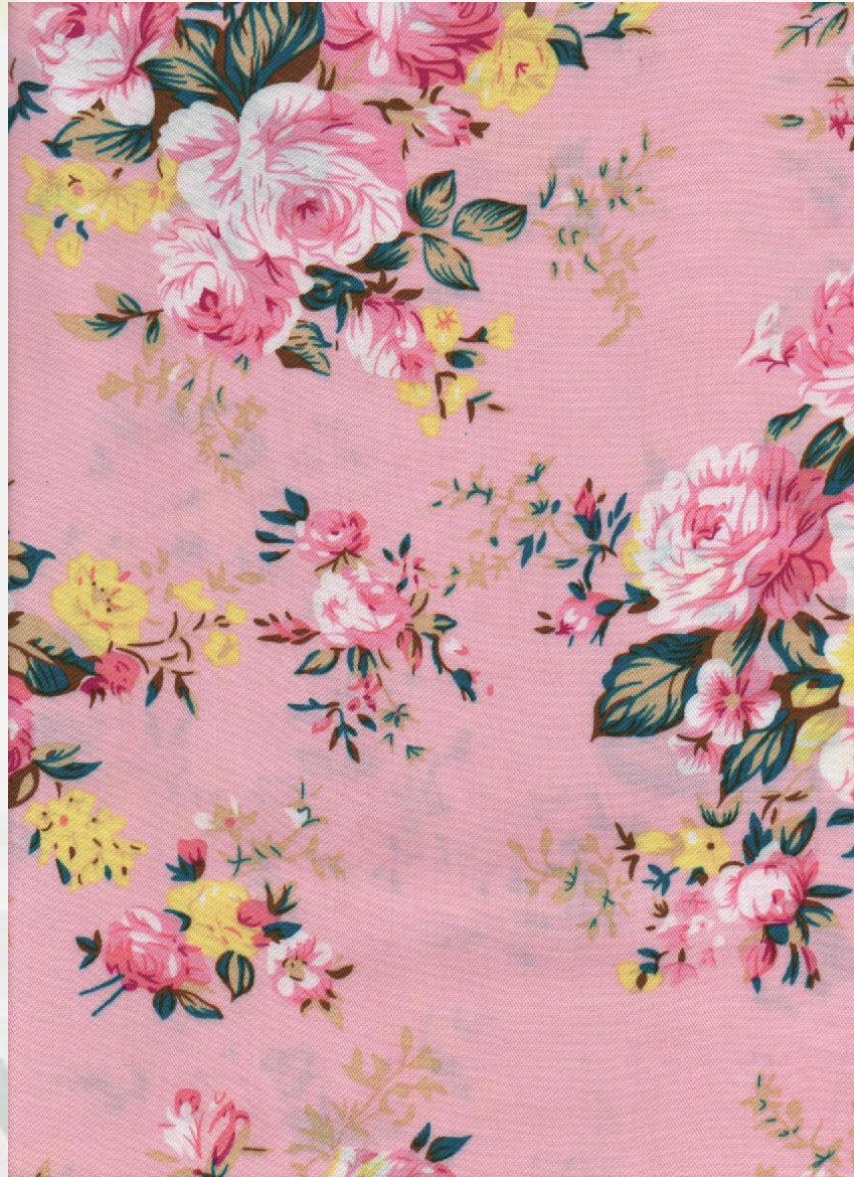
| Serial No.   | STPL-D.N-2594/07 |
|--------------|------------------|
| Construction | 30x30/96x60      |
| Weave        | 2/1 S Twill      |
| Composition  | 100% Viscose     |
| Finish       | Soft finish      |
| Color        | AOP              |
| Width        | 57"-58"          |
| GSM          | 134(± 5%)        |
| Reference    | 163/21           |

| Serial No.   | STPL-D.N-2484/07 |
|--------------|------------------|
| Construction | 30x30/96x60      |
| Weave        | 2/1 S Twill      |
| Composition  | 100% Viscose     |
| Finish       | Soft finish      |
| Color        | AOP              |
| Width        | 57"-58"          |
| GSM          | 136(± 5%)        |
| Reference    | 127/21           |

# Style No-07

Say Hello To A New Movement Of Freedom

The New Horizons' Denim That Allows The Wearer Unparalleled Freedom Of Movement. Taking Inspiration From This Notion, We Named The New Line Horizons' And Developed A Campaign That Showcases The Freedom Of Movement Allowed By The Virtues Inherent In The Product.



| Serial No.   | STPL-D.N-2478/08 |
|--------------|------------------|
| Construction | 30x30/96x60      |
| Weave        | 2/1 S Twill      |
| Composition  | 100% Viscose     |
| Finish       | Soft finish      |
| Color        | AOP              |
| Width        | 57"-58"          |
| GSM          | 136 (± 5%)       |
| Reference    | 122/21           |

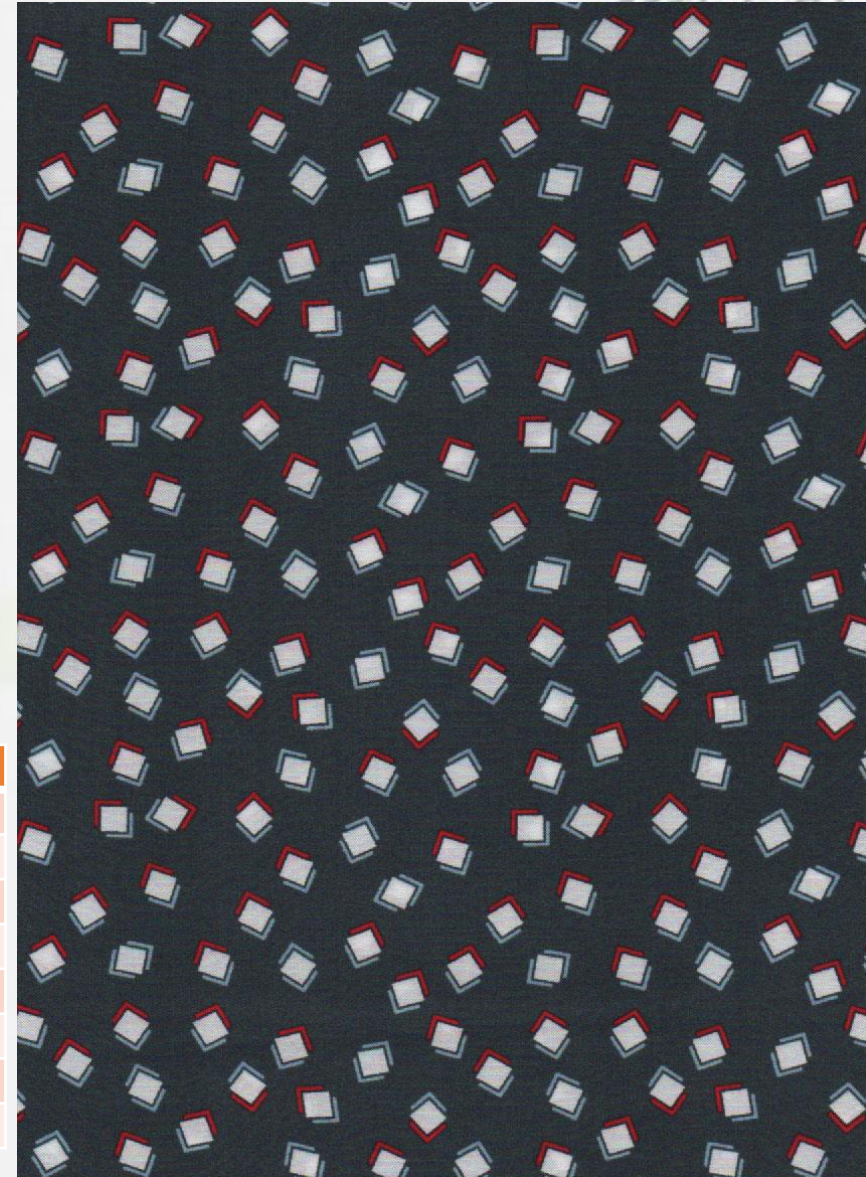
| Serial No.   | STPL-D.N-2481 |
|--------------|---------------|
| Construction | 30x30/96x60   |
| Weave        | 2/1 S Twill   |
| Composition  | 100% Viscose  |
| Finish       | Soft finish   |
| Color        | AOP           |
| Width        | 57"-58"       |
| GSM          | 136 (± 5%)    |
| Reference    | 167           |



# Style No-08

Say Hello To A New Movement Of Freedom

The New Horizons' Denim That Allows The Wearer Unparalleled Freedom Of Movement. Taking Inspiration From This Notion, We Named The New Line Horizons' And Developed A Campaign That Showcases The Freedom Of Movement Allowed By The Virtues Inherent In The Product.



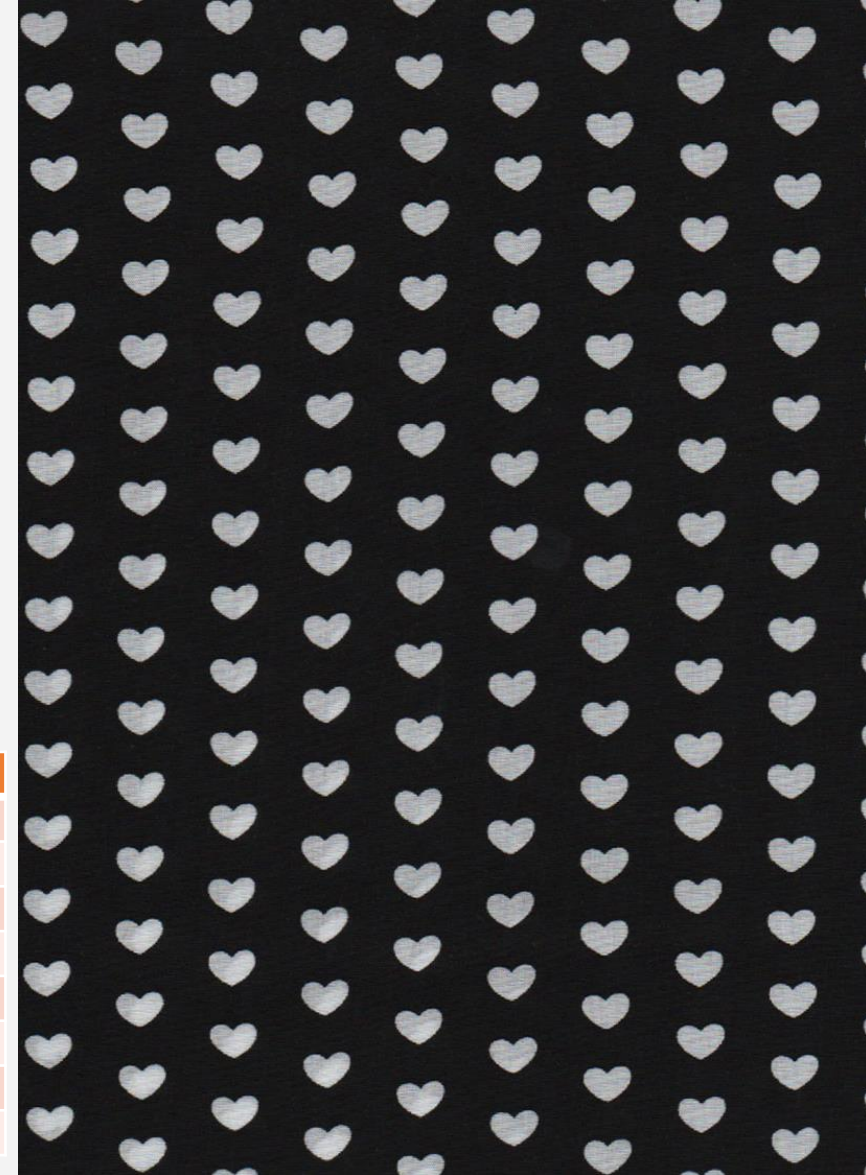
| Serial No.   | STPL-W/O.N-588/21 |
|--------------|-------------------|
| Construction | 30x30/76x64       |
| Weave        | 1/1 Plain         |
| Composition  | 100% Viscose      |
| Finish       | Soft finish       |
| Color        | AOP               |
| Width        | 56"-57"           |
| GSM          | 125 (± 5%)        |
| Reference    | 151/21            |

| Serial No.   | STPL-D.N-2605/02 |
|--------------|------------------|
| Construction | 30x30/74x68      |
| Weave        | 1/1 Plain        |
| Composition  | 100% Viscose     |
| Finish       | Soft finish      |
| Color        | AOP              |
| Width        | 58"-59"          |
| GSM          | 135 (± 5%)       |
| Reference    | 129/21           |

# Style No-09

Say Hello To A New Movement Of Freedom

The New Horizons' Denim That Allows The Wearer Unparalleled Freedom Of Movement. Taking Inspiration From This Notion, We Named The New Line Horizons' And Developed A Campaign That Showcases The Freedom Of Movement Allowed By The Virtues Inherent In The Product.



| Serial No.   | STPL-W.O-1631 |
|--------------|---------------|
| Construction | 30x30/76x64   |
| Weave        | 1/1 Plain     |
| Composition  | 100% Viscose  |
| Finish       | Soft finish   |
| Color        | AOP           |
| Width        | 59"           |
| GSM          | 124 (± 5%)    |
| Reference    | 123/21        |

| Serial No.   | STPL-D.N-822/01 |
|--------------|-----------------|
| Construction | 40x30/125x68    |
| Weave        | 2/1 S Twill     |
| Composition  | 100% Viscose    |
| Finish       | Soft finish     |
| Color        | AOP             |
| Width        | 59"-60"         |
| GSM          | 150 (± 5%)      |
| Reference    | 146/21          |

# Style No-10

Say Hello To A New Movement Of Freedom

The New Horizons' Denim That Allows The Wearer Unparalleled Freedom Of Movement. Taking Inspiration From This Notion, We Named The New Line Horizons' And Developed A Campaign That Showcases The Freedom Of Movement Allowed By The Virtues Inherent In The Product.



| Serial No.   | STPL-D.N-2555/04 |
|--------------|------------------|
| Construction | 40x40/103x60     |
| Weave        | 1/1 Plain        |
| Composition  | 100% Viscose     |
| Finish       | Soft finish      |
| Color        | AOP              |
| Width        | 57"              |
| GSM          | 102 (± 5%)       |
| Reference    | 113/21           |

| Serial No.   | STPL-D.N-2556/03 |
|--------------|------------------|
| Construction | 30x30/103x60     |
| Weave        | 2/1 S Twill      |
| Composition  | 100% Viscose     |
| Finish       | Soft finish      |
| Color        | AOP              |
| Width        | 57"              |
| GSM          | 145 (± 5%)       |
| Reference    | 114/21           |

 EcoVero™  
Peach Finish



SAAD  
GROUP

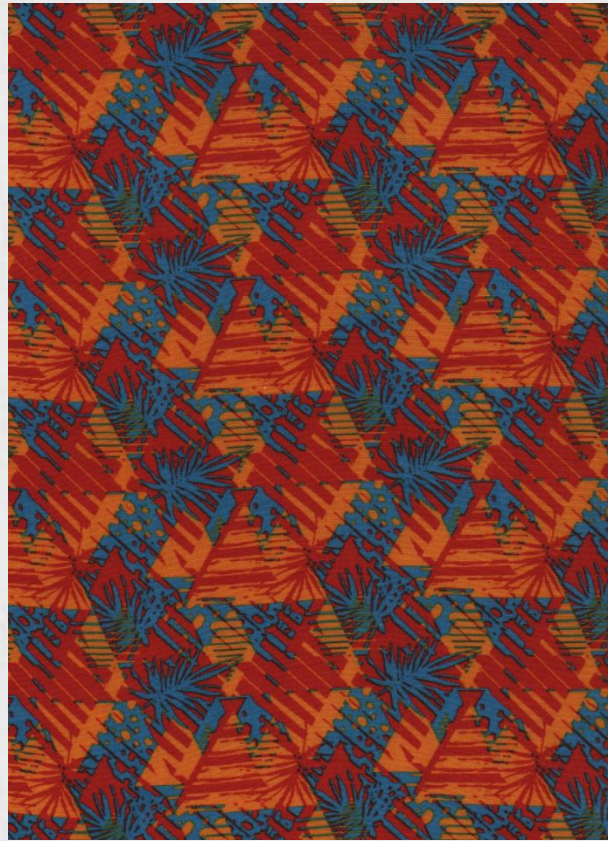


|              |              |
|--------------|--------------|
| Construction | 30x30/80x68  |
| Composition  | 100% Viscose |
| GSM          | 125          |

LEADING  
EcoVero™  
Peach Finish



SAAD  
GROUP

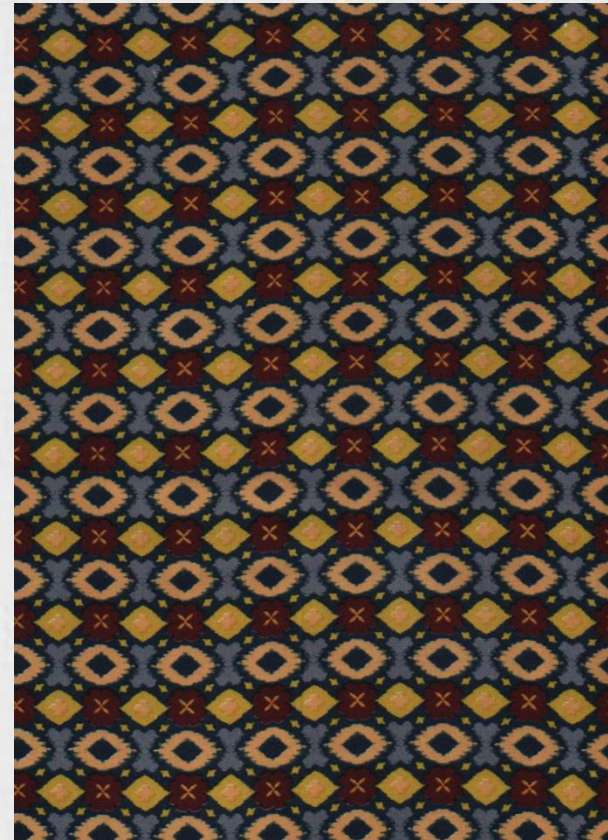
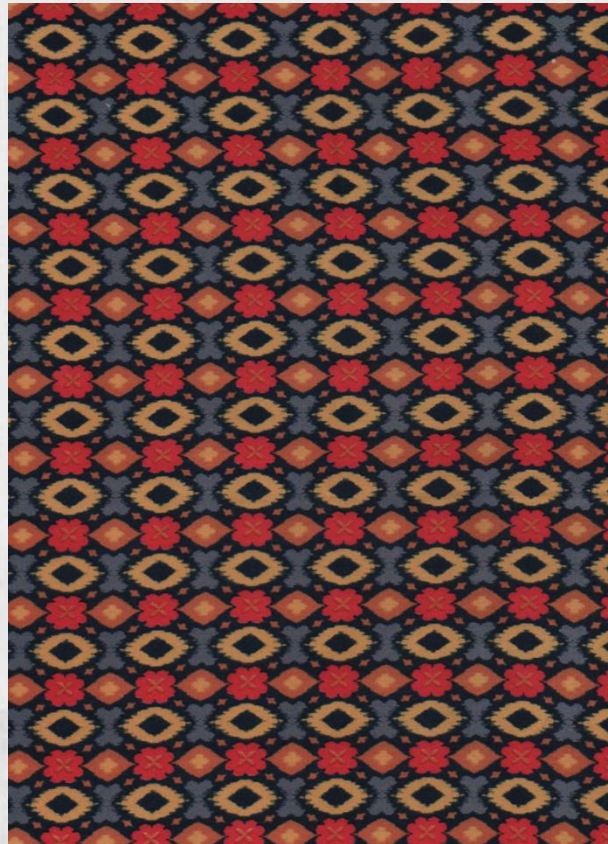


|              |              |
|--------------|--------------|
| Construction | 30x30/80x68  |
| Composition  | 100% Viscose |
| GSM          | 125          |

ECO  
EcoVero™  
Peach Finish



SAAD  
GROUP

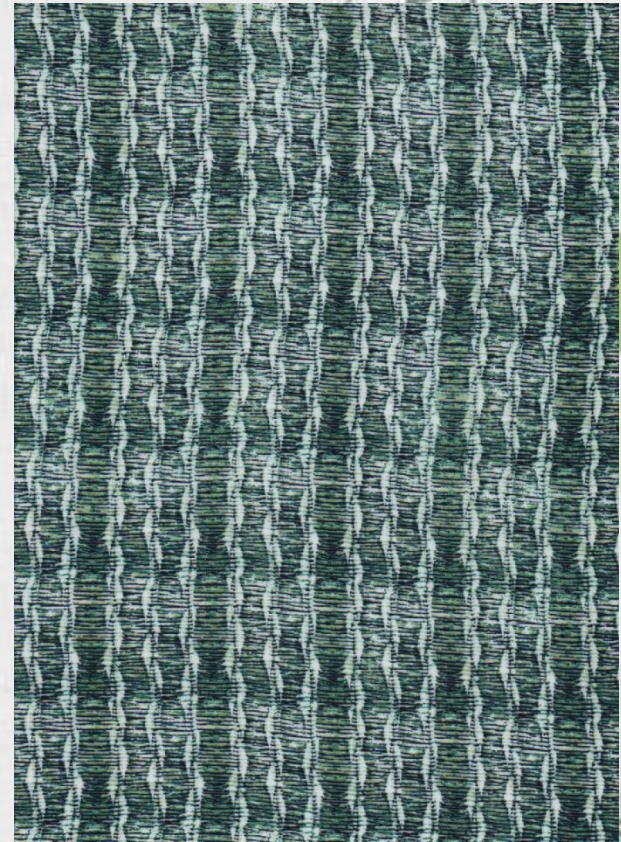


|              |              |
|--------------|--------------|
| Construction | 30x30/80x68  |
| Composition  | 100% Viscose |
| GSM          | 125          |

LEADING  
EcoVero™  
Peach Finish



SAAD  
GROUP



|              |              |
|--------------|--------------|
| Construction | 30x30/80x68  |
| Composition  | 100% Viscose |
| GSM          | 125          |

LEADING  
EcoVero™  
Peach Finish



SAAD  
GROUP



|              |              |
|--------------|--------------|
| Construction | 30x30/80x68  |
| Composition  | 100% Viscose |
| GSM          | 125          |





|              |              |
|--------------|--------------|
| Construction | 30x30/80x68  |
| Composition  | 100% Viscose |
| GSM          | 125          |

LEADING  
EcoVero™  
Peach Finish



SAAD  
GROUP

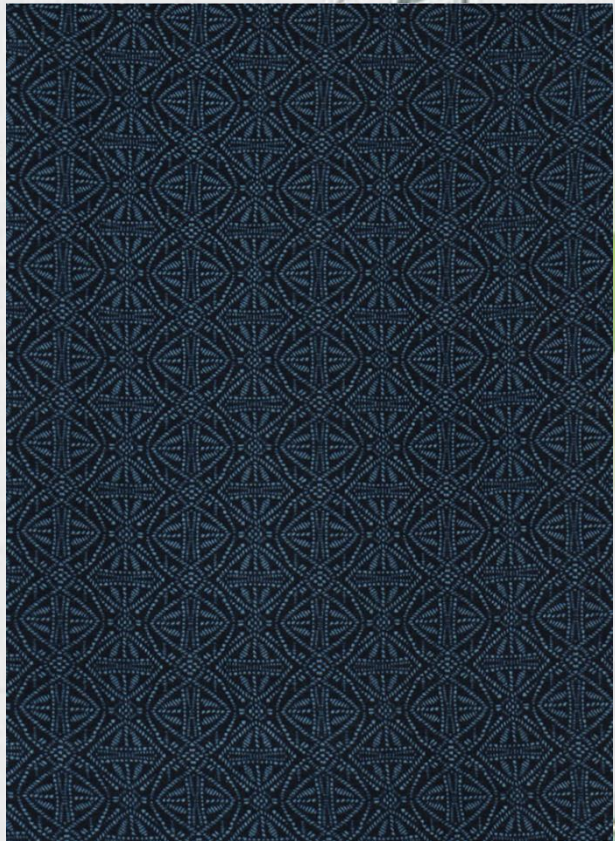


|              |              |
|--------------|--------------|
| Construction | 30x30/80x68  |
| Composition  | 100% Viscose |
| GSM          | 125          |

 **EcoVero™**  
Peach Finish



**SAAD**  
GROUP



|              |              |
|--------------|--------------|
| Construction | 30x30/80x68  |
| Composition  | 100% Viscose |
| GSM          | 125          |

LEADING  
EcoVero™  
Peach Finish



SAAD  
GROUP



|              |              |
|--------------|--------------|
| Construction | 30x30/80x68  |
| Composition  | 100% Viscose |
| GSM          | 125          |



LEADING  
EcoVero™  
PEACH FINISH



SAAD  
GROUP

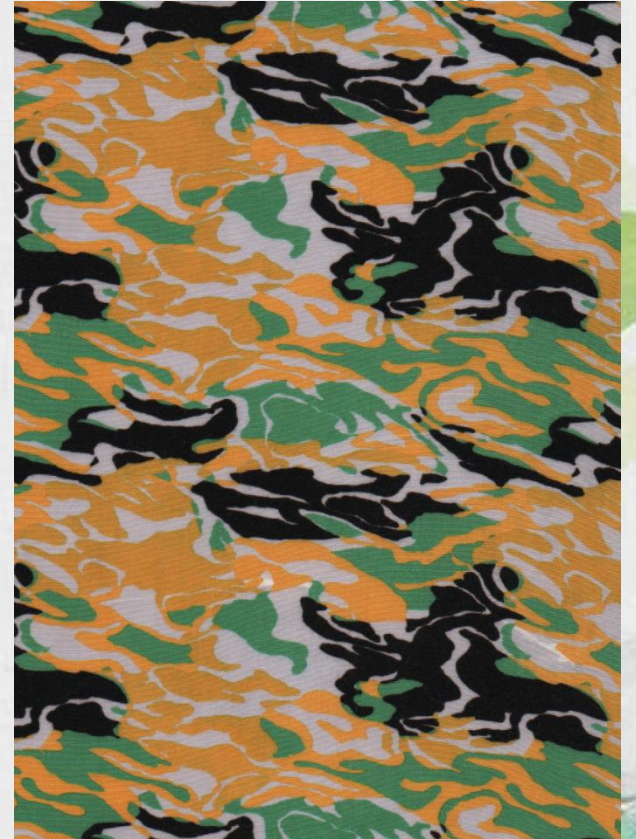


|              |              |
|--------------|--------------|
| Construction | 30x30/80x68  |
| Composition  | 100% Viscose |
| GSM          | 125          |

LEADING  
EcoVero™  
Peach Finish



SAAD  
GROUP

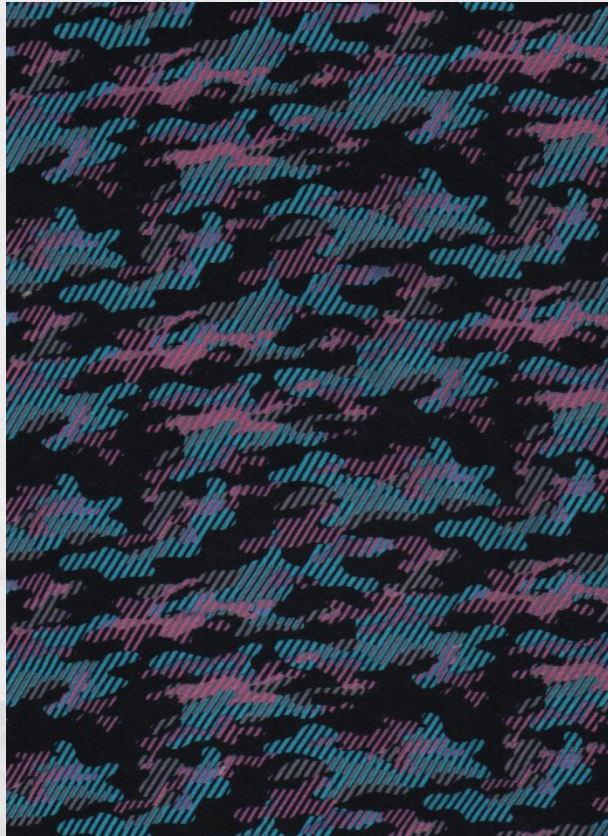


|              |              |
|--------------|--------------|
| Construction | 30x30/80x68  |
| Composition  | 100% Viscose |
| GSM          | 125          |

LEADING  
EcoVero™  
Peach Finish



SAAD  
GROUP



|              |              |
|--------------|--------------|
| Construction | 30x30/80x68  |
| Composition  | 100% Viscose |
| GSM          | 125          |

LEADING  
EcoVero™  
Peach Finish



SAAD  
GROUP



|              |              |
|--------------|--------------|
| Construction | 30x30/80x68  |
| Composition  | 100% Viscose |
| GSM          | 125          |



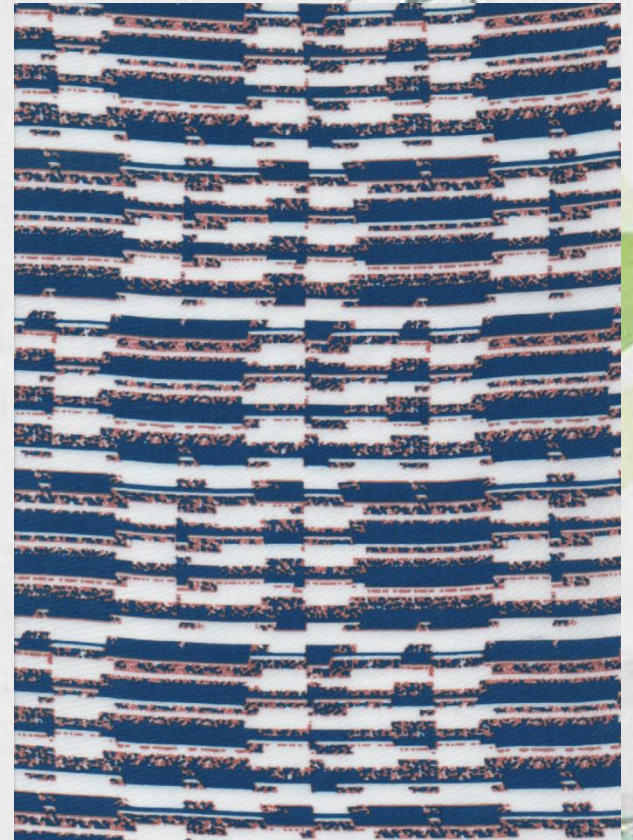
ECOVERO™  
PEACH FINISH



SAAD  
GROUP



|              |              |
|--------------|--------------|
| Construction | 30x30/80x68  |
| Composition  | 100% Viscose |
| GSM          | 125          |



 EcoVero™  
Peach Finish



SAAD  
GROUP



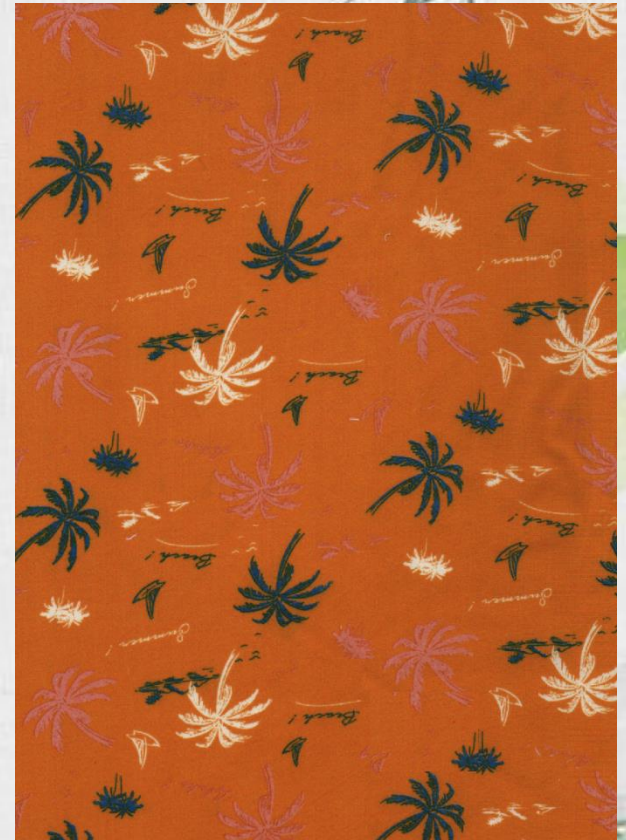
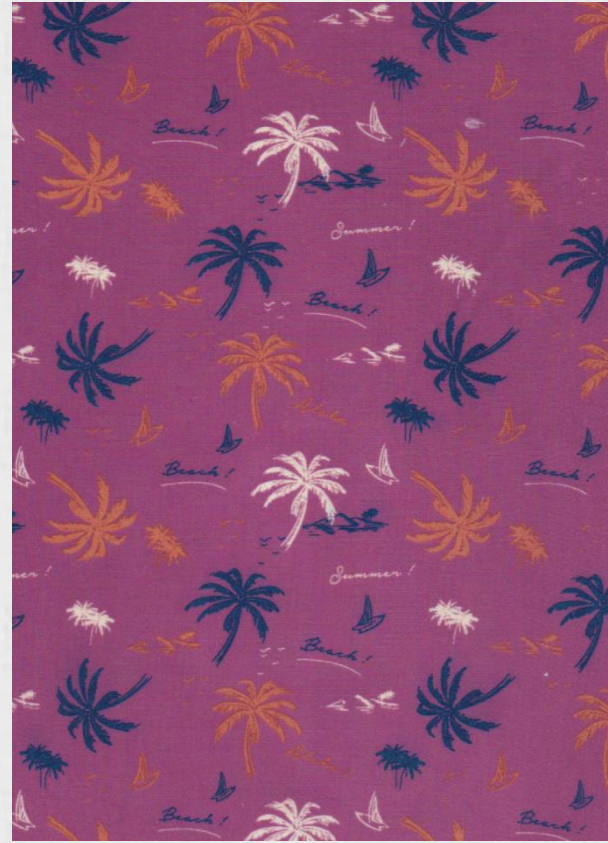
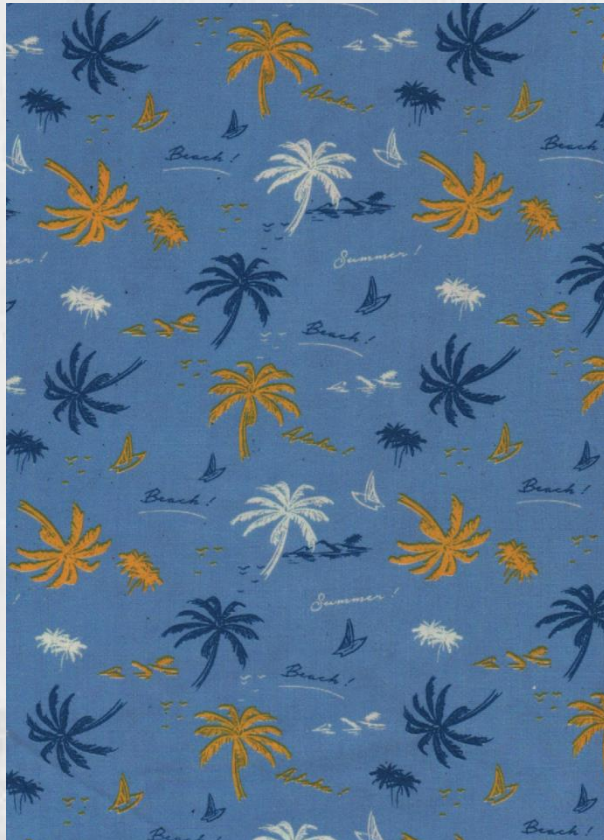
|              |              |
|--------------|--------------|
| Construction | 30x30/80x68  |
| Composition  | 100% Viscose |
| GSM          | 125          |



ECO<sup>LYN</sup> EcoVero™  
Peach Finish



SAAD  
GROUP



|              |              |
|--------------|--------------|
| Construction | 30x30/80x68  |
| Composition  | 100% Viscose |
| GSM          | 125          |

LEADING  
EcoVero™  
Peach Finish



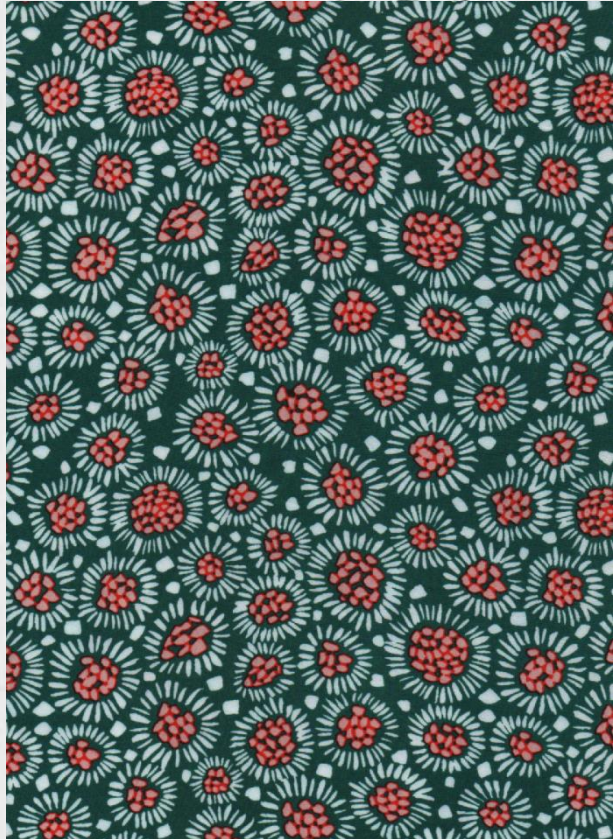
SAAD  
GROUP



|              |              |
|--------------|--------------|
| Construction | 30x30/80x68  |
| Composition  | 100% Viscose |
| GSM          | 125          |



SAAD  
GROUP



|              |              |
|--------------|--------------|
| Construction | 30x30/80x68  |
| Composition  | 100% Viscose |
| GSM          | 125          |

 EcoVero™  
Peach Finish



SAAD  
GROUP

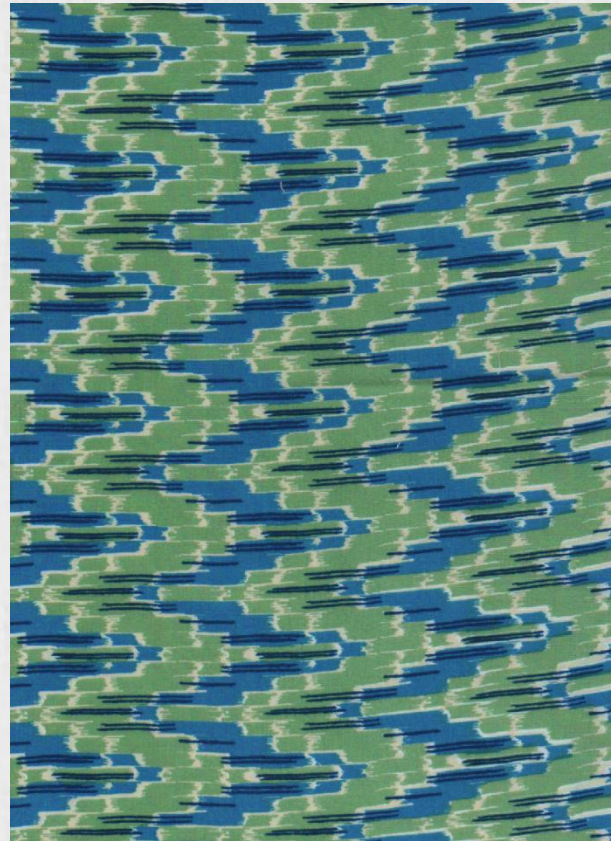
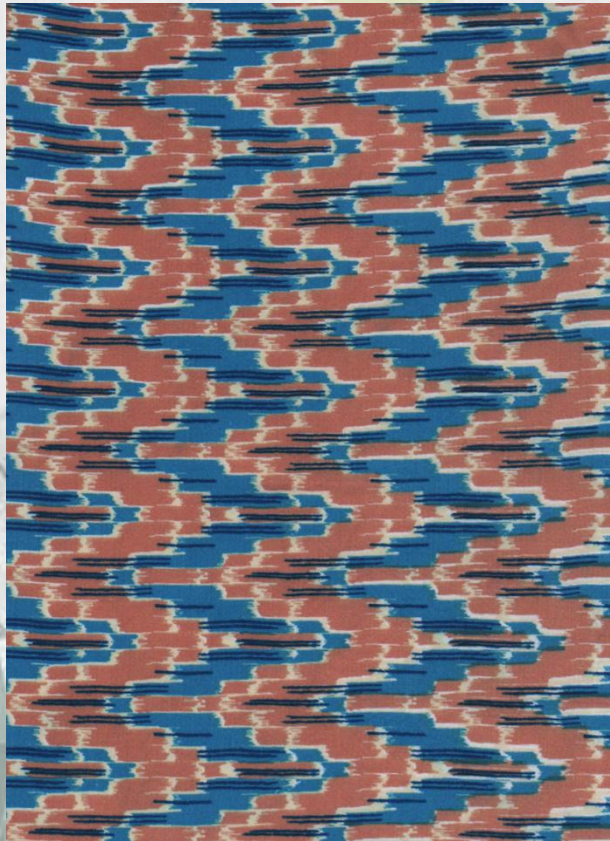


|              |              |
|--------------|--------------|
| Construction | 30x30/80x68  |
| Composition  | 100% Viscose |
| GSM          | 125          |

LEADING  
EcoVero™  
Peach Finish



SAAD  
GROUP

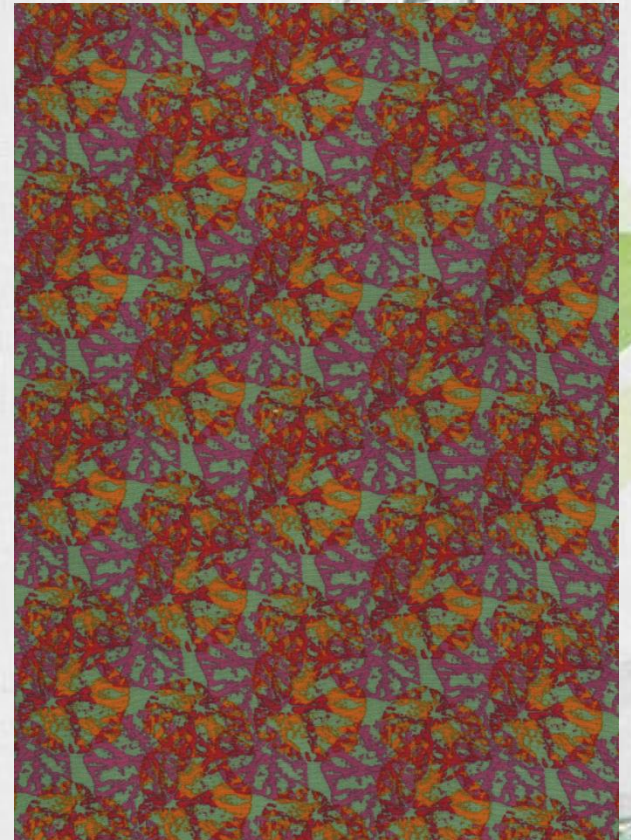
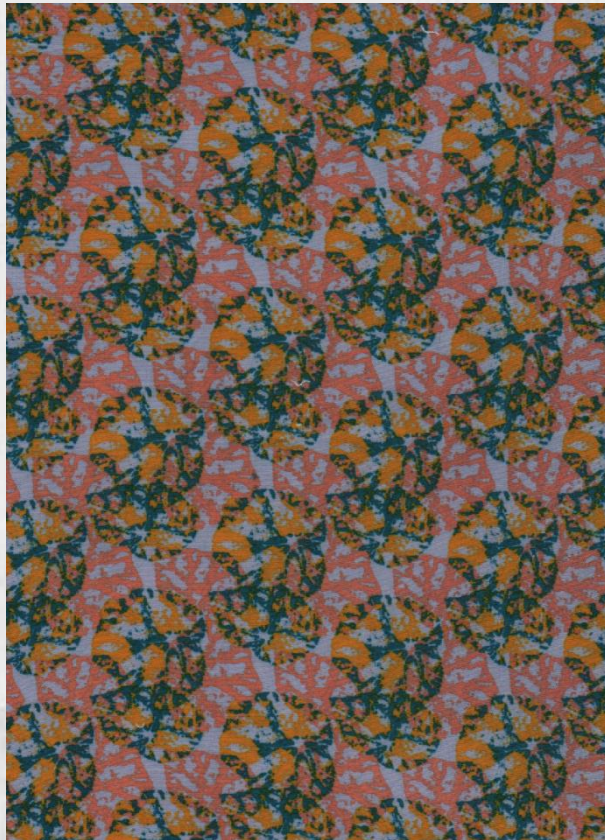


|              |              |
|--------------|--------------|
| Construction | 30x30/80x68  |
| Composition  | 100% Viscose |
| GSM          | 125          |

 **EcoVero™**  
Peach Finish



**SAAD**  
GROUP



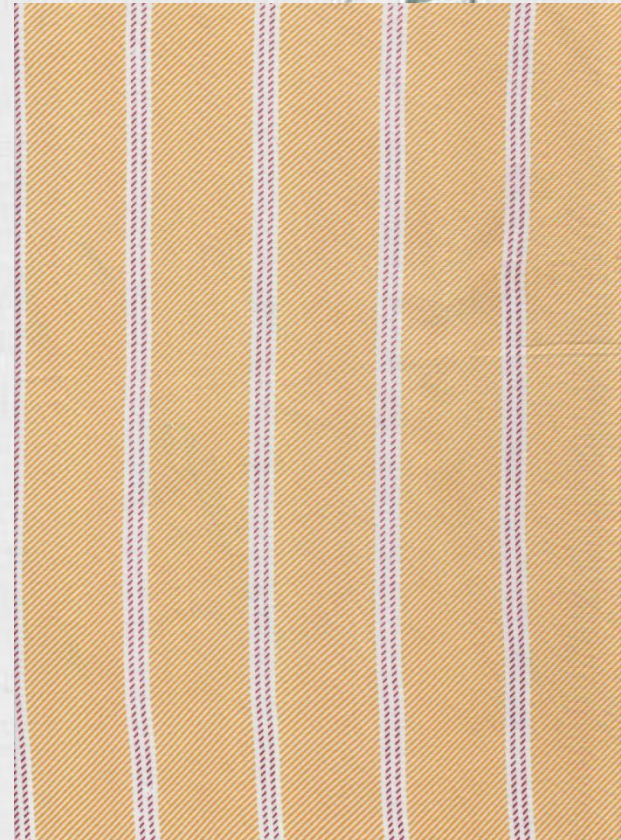
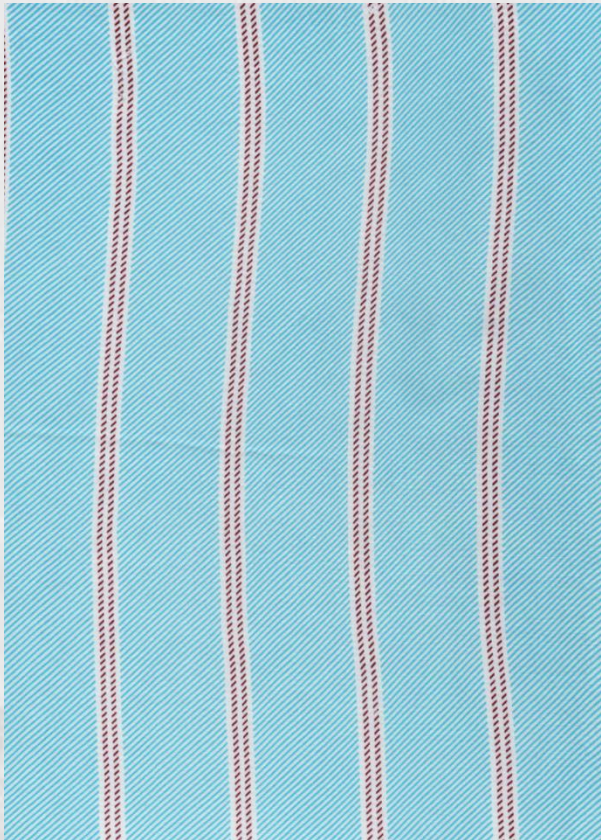
|              |              |
|--------------|--------------|
| Construction | 30x30/80x68  |
| Composition  | 100% Viscose |
| GSM          | 125          |



  
EcoVero™  
Peach Finish



SAAD  
GROUP



|              |              |
|--------------|--------------|
| Construction | 30x30/80x68  |
| Composition  | 100% Viscose |
| GSM          | 125          |

ECO  
EcoVero™  
Peach Finish



SAAD  
GROUP

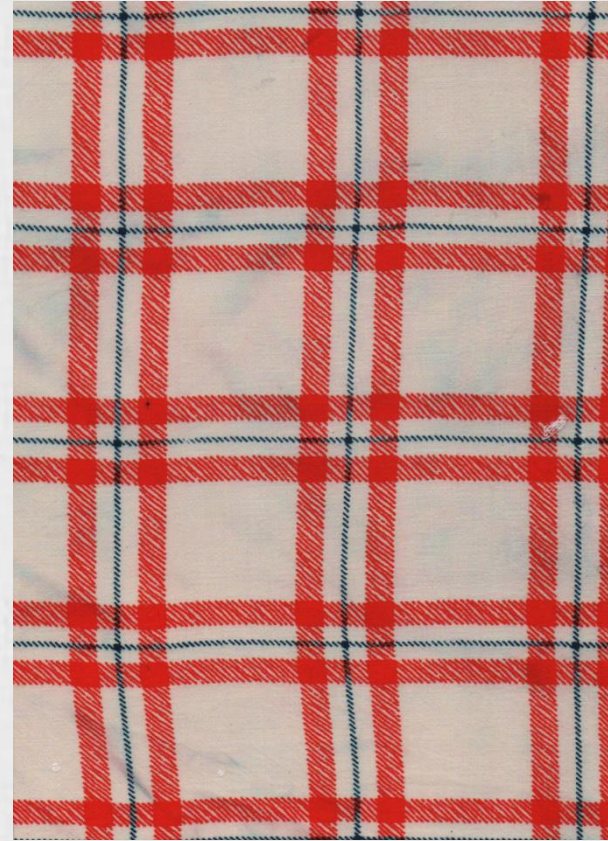


|              |              |
|--------------|--------------|
| Construction | 30x30/80x68  |
| Composition  | 100% Viscose |
| GSM          | 125          |

EcoVero™  
Peach Finish



SAAD  
GROUP



|              |              |
|--------------|--------------|
| Construction | 30x30/80x68  |
| Composition  | 100% Viscose |
| GSM          | 125          |

**THANK YOU**

