



SAAD

G R O U P

www.saadgroup.com.bd

BCI & ORGANIC Development

- 22/23

Youth colour

Palette S/S 23

Our S/S 23 palette is a curated selection for the youth market, taken from our Global Colour Forecast. More than 40% of colours have been carried over from previous seasons to encourage sustainability, the use of deadstock, and allow for newness to be mixed in as seamlessly as possible.

For youth, warm pinks and sunny yellows are central in the S/S 23 palette to reflect the market's optimism and joy. These are balanced by earthy neutrals and lush greens to integrate the influence of #thegreatoutdoors. Additionally, the growing influence of phygital realms sees Digital Lavender and Apple Mint emerge as electric, acidic additions to the seasonal palette.

Silt	18-1027 TCX	025-35-14
Butterscotch	17-1134 TCX	029-50-19
Parchment	16-0928 TCX	031-63-17
Papaya Smoothie	15-1245 TCX	026-70-32
Rooibos	18-1354 TCX	018-49-28
Setting Sun	17-1361 TCX	018-54-37
Terracotta	18-1441 TCX	017-43-20
Orange Selenite	15-1333 TCX	018-65-21
Peach Sand	15-1319 TCX	024-75-15
Luscious Red	17-1663 TCX	010-46-36
Fuchsia	17-2034 TCX	152-45-32
Wild Rose	16-3118 TCX	147-64-24
Raspberry Pink	19-1860 TCX	006-39-31
Pink Punch	17-1736 TCX	005-57-28
Vintage Pink	16-1710 TCX	001-62-12

Jacaranda Flower	17-3730 TCX	134-52-27
Digital Lavender	15-3716 TCX	134-67-16
Satin Sky	18-3949 TCX	124-38-32
Tranquil Blue	17-4139 TCX	114-57-24
Turquoise Sea	14-4522 TCX	097-70-23
Verdigris	18-4834 TCX	092-38-21
Palm Leaf	18-6018 TCX	071-36-17
Apple Mint	14-6329 TCX	065-68-24
Jade	17-0210 TCX	062-57-10
Olive Oil	17-0636 TCX	044-52-13
Celery Juice	12-0435 TCX	052-82-23
Yellow Freesia	14-0849 TCX	039-81-31
Sundial	16-1148 TCX	028-59-26
Honeycomb	13-0942 TCX	034-76-27
Vanilla Cake	13-1025 TCX	036-82-16

* All colour names are specific to WGSN. For colour codes, please refer to the following colour system reference pages: [Coloro](#) / [Pantone TCX](#) / [Pantone Coated](#) / [Archroma](#)



**Peach
Finish**



SAAD
G R O U P



NF NO.	IOM-881/20
Construction	30X16+70D/136X64
Composition	3/1 S TWILL
GSM(Calculated)	212

USE OF NATURAL / ORGANIC MATERIALS IS THE KEY AND ESSENTIAL ASPECTS. JUST LIKE ORGANIC FOOD, DURING THE GROWTH OF COTTON FARMERS ARE NOT ALLOWED TO USE SYNTHETIC FERTILIZERS & PESTICIDES. FABRICS MADE BY THIS COTTON ARE REFERRED AS ORGANIC FABRIC. WE ARE OFFERING FABRICS FROM 5% ORGANIC TO 100% ORGANIC. WE ARE BOTH GOTS AND OE CERTIFIED.





**Peach
Finish**



**SAAD
GROUP**



NF NO.	NF-00292/21
Construction	16X16+70/96X12
Composition	2/2 Z TWILL
GSM(Calculated)	275

USE OF NATURAL / ORGANIC MATERIALS IS THE KEY AND ESSENTIAL ASPECTS. JUST LIKE ORGANIC FOOD, DURING THE GROWTH OF COTTON FARMERS ARE NOT ALLOWED TO USE SYNTHETIC FERTILIZERS & PESTICIDES. FABRICS MADE BY THIS COTTON ARE REFERRED AS ORGANIC FABRIC. WE ARE OFFERING FABRICS FROM 5% ORGANIC TO 100% ORGANIC. WE ARE BOTH GOTS AND OE CERTIFIED.





**Peach
Finish**

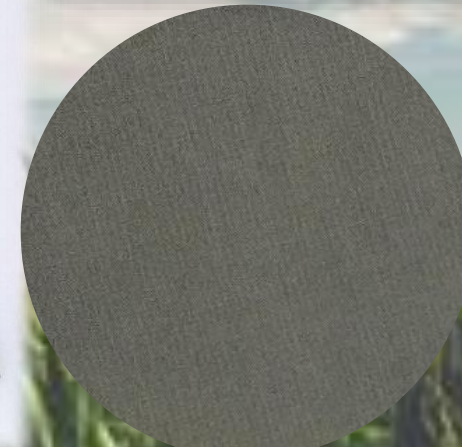


SAAD
G R O U P



NF NO.	IOM-4609/21
Construction	20X14+70D/116X62
Composition	98 % COTTON+2% SPANDEX
GSM(Calculated)	263

USE OF NATURAL / ORGANIC MATERIALS IS THE KEY AND ESSENTIAL ASPECTS. JUST LIKE ORGANIC FOOD, DURING THE GROWTH OF COTTON FARMERS ARE NOT ALLOWED TO USE SYNTHETIC FERTILIZERS & PESTICIDES. FABRICS MADE BY THIS COTTON ARE REFERRED AS ORGANIC FABRIC. WE ARE OFFERING FABRICS FROM 5% ORGANIC TO 100% ORGANIC. WE ARE BOTH GOTS AND OE CERTIFIED.




SAAD
G R O U P
www.saadgroup.com.bd

NF NO.	IOM-4690/21
Construction	20X16/128X60
Composition	100% BCI COTTON
GSM(Calculated)	235



USE OF NATURAL / ORGANIC MATERIALS IS THE KEY AND ESSENTIAL ASPECTS. JUST LIKE ORGANIC FOOD, DURING THE GROWTH OF COTTON FARMERS ARE NOT ALLOWED TO USE SYNTHETIC FERTILIZERS & PESTICIDES. FABRICS MADE BY THIS COTTON ARE REFERRED AS ORGANIC FABRIC. WE ARE OFFERING FABRICS FROM 5% ORGANIC TO 100% ORGANIC. WE ARE BOTH GOTS AND OE CERTIFIED.



SAAD GROUP





Peach Finish



SAAD GROUP



NF NO.	IOM-570/20
Construction	(20+6)X(20+6)/88X58
Composition	100% COTTON
GSM(Calculated)	200

USE OF NATURAL / ORGANIC MATERIALS IS THE KEY AND ESSENTIAL ASPECTS. JUST LIKE ORGANIC FOOD, DURING THE GROWTH OF COTTON FARMERS ARE NOT ALLOWED TO USE SYNTHETIC FERTILIZERS & PESTICIDES. FABRICS MADE BY THIS COTTON ARE REFERRED AS ORGANIC FABRIC. WE ARE OFFERING FABRICS FROM 5% ORGANIC TO 100% ORGANIC. WE ARE BOTH GOTS AND OE CERTIFIED.




SAAD
 GROUP
www.saadgroup.com.bd



Peach Finish

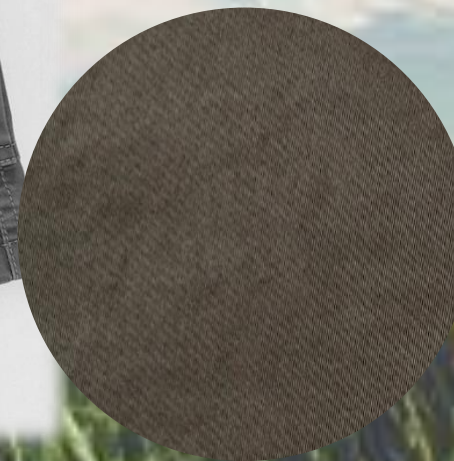


SAAD GROUP



NF NO.	IOM-301/20
Construction	30X20+70D/180X78
Composition	98% BCI COTTON+2% SPANDEX
GSM(Calculated)	245

USE OF NATURAL / ORGANIC MATERIALS IS THE KEY AND ESSENTIAL ASPECTS. JUST LIKE ORGANIC FOOD, DURING THE GROWTH OF COTTON FARMERS ARE NOT ALLOWED TO USE SYNTHETIC FERTILIZERS & PESTICIDES. FABRICS MADE BY THIS COTTON ARE REFERRED AS ORGANIC FABRIC. WE ARE OFFERING FABRICS FROM 5% ORGANIC TO 100% ORGANIC. WE ARE BOTH GOTS AND OE CERTIFIED.





NF NO.	IOM-00206/21
Construction	40X20+70D/170X80
Composition	98% BCI COTTON+2% SPANDEX
GSM(Calculated)	220

USE OF NATURAL / ORGANIC MATERIALS IS THE KEY AND ESSENTIAL ASPECTS. JUST LIKE ORGANIC FOOD, DURING THE GROWTH OF COTTON FARMERS ARE NOT ALLOWED TO USE SYNTHETIC FERTILIZERS & PESTICIDES. FABRICS MADE BY THIS COTTON ARE REFERRED AS ORGANIC FABRIC. WE ARE OFFERING FABRICS FROM 5% ORGANIC TO 100% ORGANIC. WE ARE BOTH GOTS AND OE CERTIFIED.



Peach Finish



SAAD
GROUP



SAAD
GROUP
www.saadgroup.com.bd



Peach
Finish



SAAD
GROUP



NF NO.	IOM-4526/20
Construction	7X10/81X39
Composition	100% BCI COTTON
GSM(Calculated)	360

USE OF NATURAL / ORGANIC MATERIALS IS THE KEY AND ESSENTIAL ASPECTS. JUST LIKE ORGANIC FOOD, DURING THE GROWTH OF COTTON FARMERS ARE NOT ALLOWED TO USE SYNTHETIC FERTILIZERS & PESTICIDES. FABRICS MADE BY THIS COTTON ARE REFERRED AS ORGANIC FABRIC. WE ARE OFFERING FABRICS FROM 5% ORGANIC TO 100% ORGANIC. WE ARE BOTH GOTS AND OE CERTIFIED.




SAAD
GROUP
www.saadgroup.com.bd



SAAD
GROUP



NF NO.	IOM-4028 R/20
Construction	10+105LX10+70D/8 OX55
Composition	98% BCI COTTON+2% SPANDEX
GSM(Calculated)	340

USE OF NATURAL / ORGANIC MATERIALS IS THE KEY AND ESSENTIAL ASPECTS. JUST LIKE ORGANIC FOOD, DURING THE GROWTH OF COTTON FARMERS ARE NOT ALLOWED TO USE SYNTHETIC FERTILIZERS & PESTICIDES. FABRICS MADE BY THIS COTTON ARE REFERRED AS ORGANIC FABRIC. WE ARE OFFERING FABRICS FROM 5% ORGANIC TO 100% ORGANIC. WE ARE BOTH GOTS AND OE CERTIFIED.





**Peach
Finish**



SAAD
G R O U P



NF NO.	IOM-3606/20
Construction	20X20/62X56
Composition	100% BCI COTTON
GSM(Calculated)	139

USE OF NATURAL / ORGANIC MATERIALS IS THE KEY AND ESSENTIAL ASPECTS. JUST LIKE ORGANIC FOOD, DURING THE GROWTH OF COTTON FARMERS ARE NOT ALLOWED TO USE SYNTHETIC FERTILIZERS & PESTICIDES. FABRICS MADE BY THIS COTTON ARE REFERRED AS ORGANIC FABRIC. WE ARE OFFERING FABRICS FROM 5% ORGANIC TO 100% ORGANIC. WE ARE BOTH GOTS AND OE CERTIFIED.




SAAD
G R O U P
www.saadgroup.com.bd



**Peach
Finish**



NF NO.	IOM-1425/20
Construction	40X40/108X70
Composition	100% BCI COTTON
GSM(Calculated)	105

USE OF NATURAL / ORGANIC MATERIALS IS THE KEY AND ESSENTIAL ASPECTS. JUST LIKE ORGANIC FOOD, DURING THE GROWTH OF COTTON FARMERS ARE NOT ALLOWED TO USE SYNTHETIC FERTILIZERS & PESTICIDES. FABRICS MADE BY THIS COTTON ARE REFERRED AS ORGANIC FABRIC. WE ARE OFFERING FABRICS FROM 5% ORGANIC TO 100% ORGANIC. WE ARE BOTH GOTS AND OE CERTIFIED.



SAAD
G R O U P



SAAD
G R O U P
www.saadgroup.com.bd

A vast field of cotton plants under a clear blue sky. The plants are densely packed, and many of the cotton bolls are fully open, showing their white, fluffy seeds. The overall scene is bright and sunny, with a slight haze in the distance.

THANK YOU.